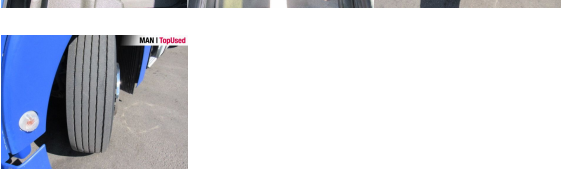
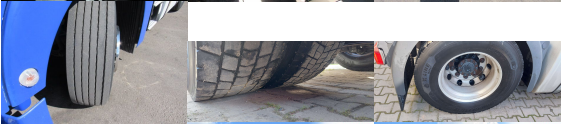


# MAN TGX 18.440 4X2 BLS

SH0214622



Price

**7,990 EUR** (net)

**9,668 EUR** (gross)

Offer Date

06.08.2025

Body type	Tractor unit
1st reg.	08/2015
Power	324kW (441 HP)
Mileage	1035041 km
Storage location	Otopeni - MHS Truck Service

## BASIC DATA

Brand	MAN
Model serie	TGX
Model variant	TGX TG2
Body type	Tractor unit (Standard)
Colours	blue
Driver's cab	XXL
Berths	2 berths

## TECHNICAL DATA

Power	324 kW (441 HP)
Fuel	Diesel
Gearbox type	Semiautomatic
Wheel drive	4x2
Suspension	Leaf air suspension
Axles	2 axles

## WEIGHTS AND MEASURES

GVW	18,000 kg
Rear overhang	800 mm
Wheel base	3600 mm
Fuel tank	AdBlue: 60 l Fuel tank: 580 l Fuel tank: 580 l
Emission category	Euro6

## EQUIPMENT

### Safety

- Antilock Braking System ABS
- Anti Slip Regulation ASR
- Electr. Stability Programm ESP
- Tyre Pressure Control System TPM
- Immobilizer
- Rear underrun
- Kerb mirror: right
- Heated wide angle mirror

### Interior

- Board computer
- Multifunctional leather steering wheel
- Digital tachograph
- Carpet floor covering
- Cooling box

### Exterior

- Self-levelling suspension
- Electr. and heated rear view mirrors
- Low noise
- Rear differential lock
- Fifth wheel
- Spare wheel
- Working lights
- Telematics system

### Assistance systems

- Cruise control
- MAN BrakeMatic

### Comfort

- Adjustable steering column
- Electric window lift 2x
- Automatic climate control
- Driver's armrest
- Electr. lifting sunroof
- Comfortable front seats
- Additional heating
- Central locking with remote control
- Air-suspended front seats
- Isolated driver's cab
- DC/AC converter

### Light and sight

- Fog lights
- Tinted glass
- Headlight range control
- Cornering light
- Daytime running lights

### Audio & communication

- Radio/CD
- Mobile phone preparation Bluetooth
- AUX & USB connector

- Hill Hold Control HHC
- efficientroll
- Speed limiter

### **Wheels and tyres**

- Spare wheel carrier

### **Equipment packages**

- Aero package
- Efficientline 2 package

### **Others**

- front springs parabolic 7.5 t, rear air suspension 13 t, hub reduction rear axle Hypoid HY-1350, HY axle ratio i 2.71, fuel filter heating, cab insulation NORDIC, wiring for tank truck to ADR, ADR Typ AT, equipment for dangerous goods to ADR, type OX, supply kit for semitrailer with lifting axle or moving-off aid, trailer socket 24V (7-7-pin), pick-up plate 40 mm